

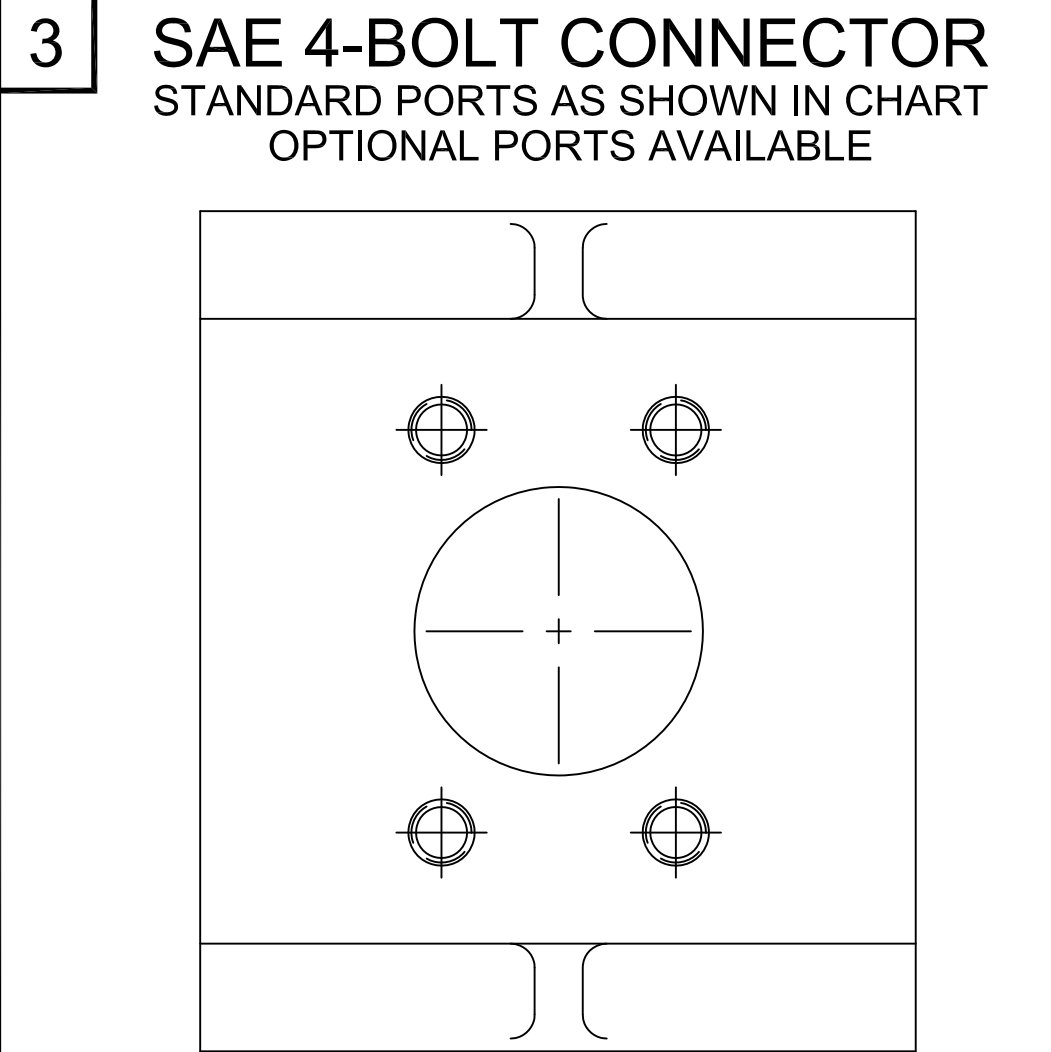
MOUNTING DIMENSIONS				SPECIFICATIONS							
SIZE	A	B	-	SIZE	U.S. GALLONS	CUBIC INCHES	CUBIC CENT.	MIN. RPM	MAX. RPM	MAX. PRESSURE	
-	-	-	-	-	-	-	-	-	-	-	-
F45	6.68	11.38	-	F45	.0386	8.92	146.2	600	2500	4000 *	281
F50	6.90	11.61	-	F50	.0427	9.86	161.6	600	2500	4000 *	281
F55	7.13	11.83	-	F55	.0470	10.86	178.0	600	2500	3400 *	239
F66	7.66	12.36	-	F66	.0570	13.17	215.9	600	2500	2900 *	204
F77 **	8.13	12.82	-	F77	.0658	15.20	249.2	600	2500	2750 *	190
F85 **	8.13	13.19	-	F85	.0727	16.79	275.2	600	2500	2250*	155

** F77 & F85 AVAILABLE WITH 4" SAE 4-BOLT CONNECTOR ON SUCTION AND 2" SAE 4-BOLT CONNECTOR ON DISCHARGE (BOTH CODE 4)

F77 & F85 WITH 3" AND 1 1/2' PORTS WILL BE ROTATED 90° FROM PICTURE SHOWN.

★ CONSULT FACTORY WITH TYPE APPLICATION.

FOR METRIC DIMENSIONS MULTIPLY 25.4 x IN. = mm



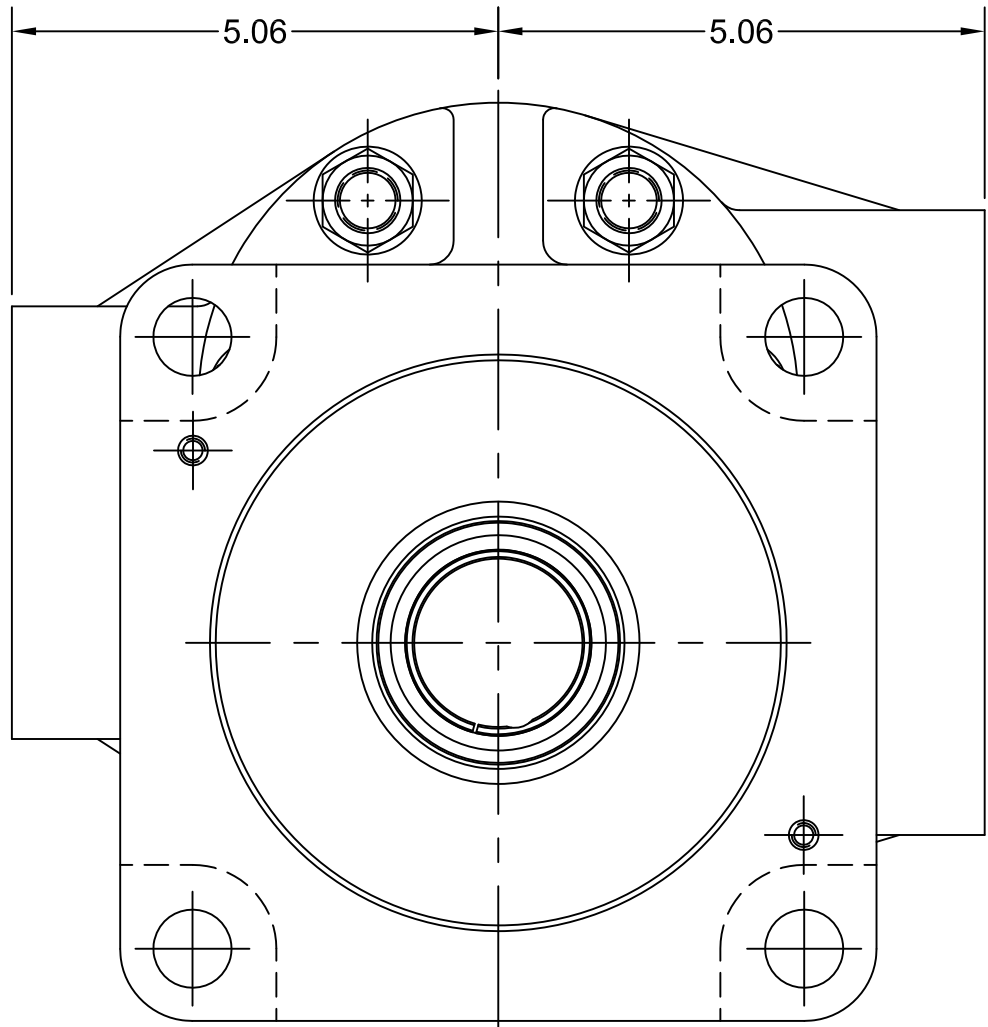
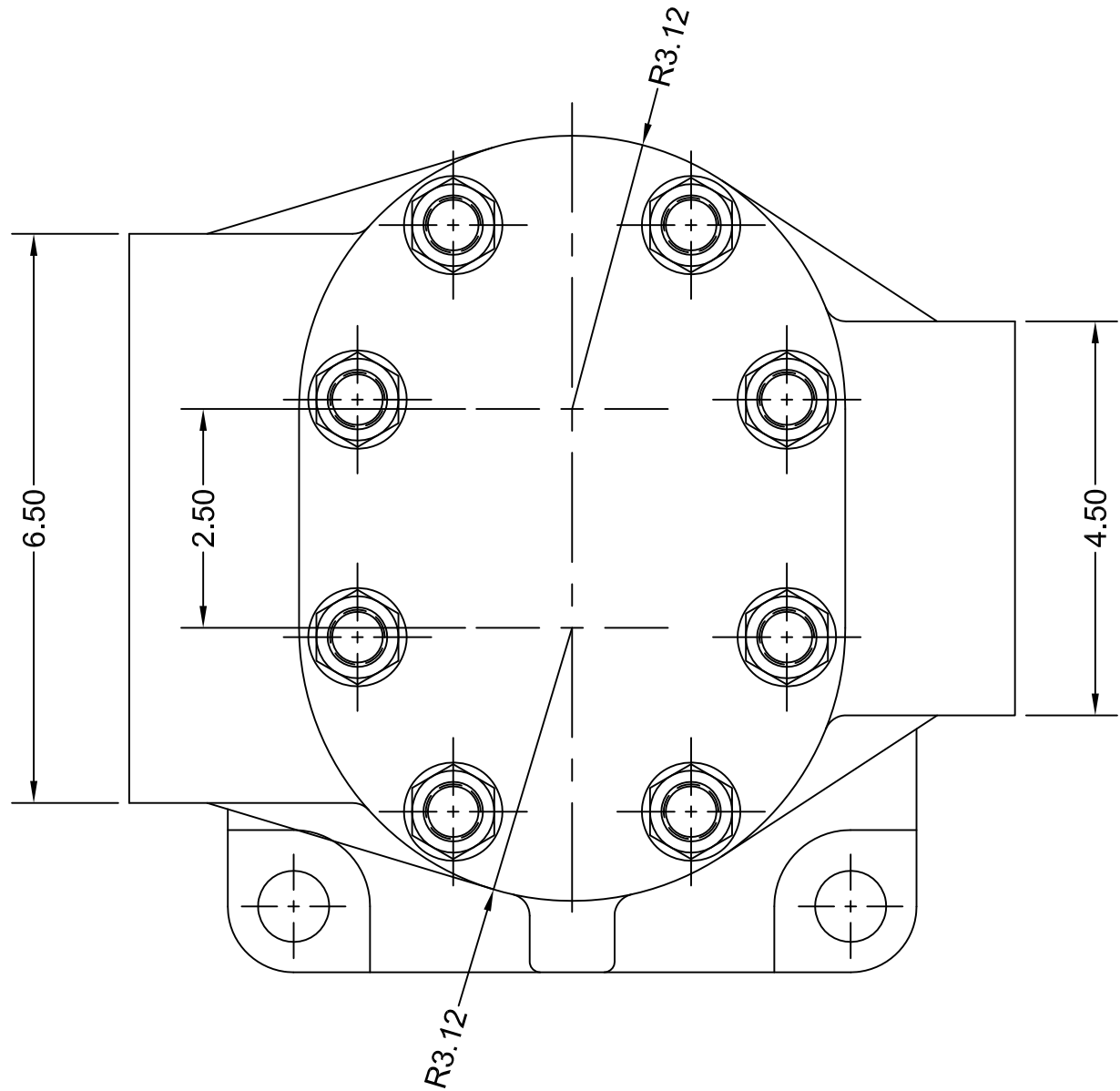
MODEL EXAMPLE

F 77 R - 2 D 3

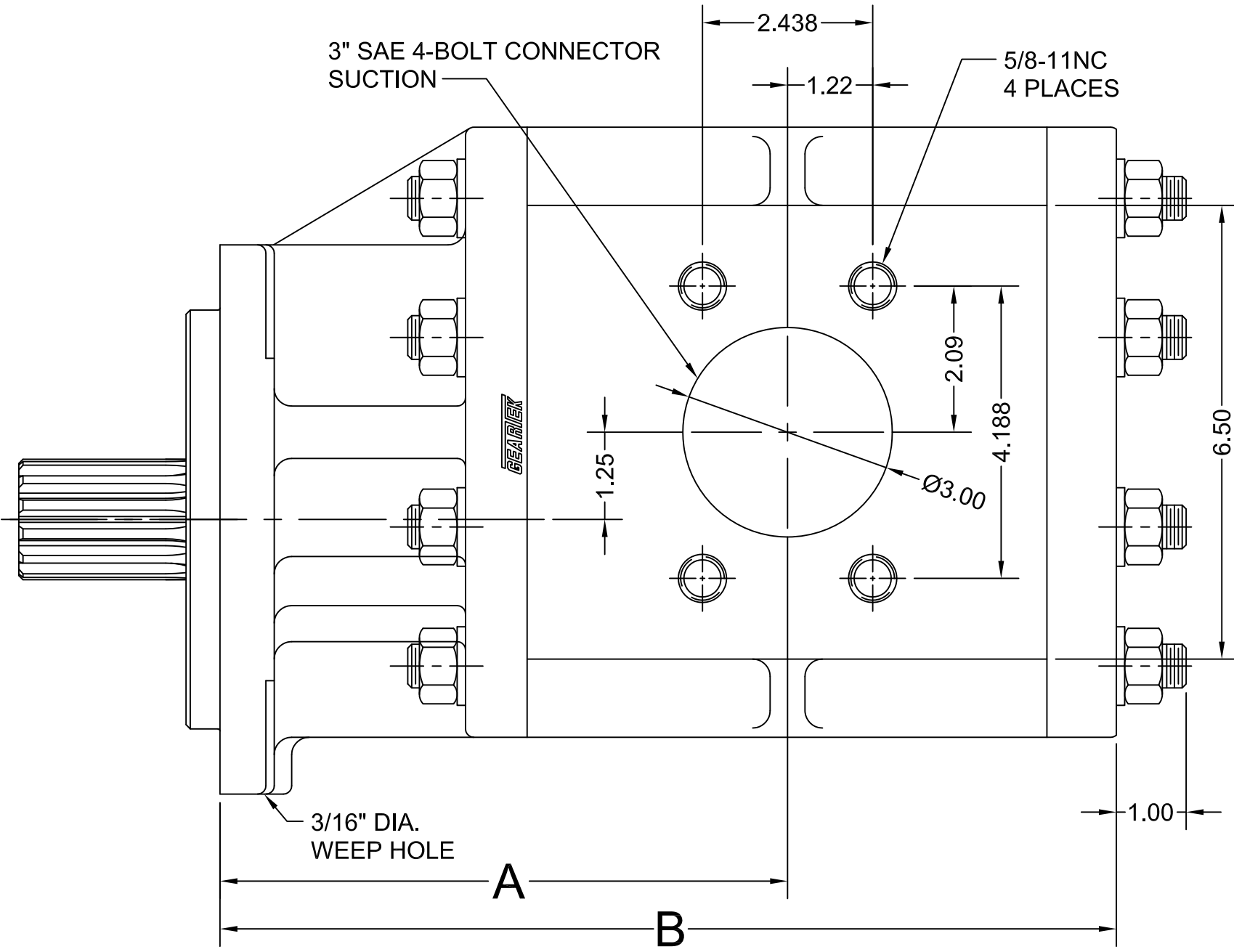
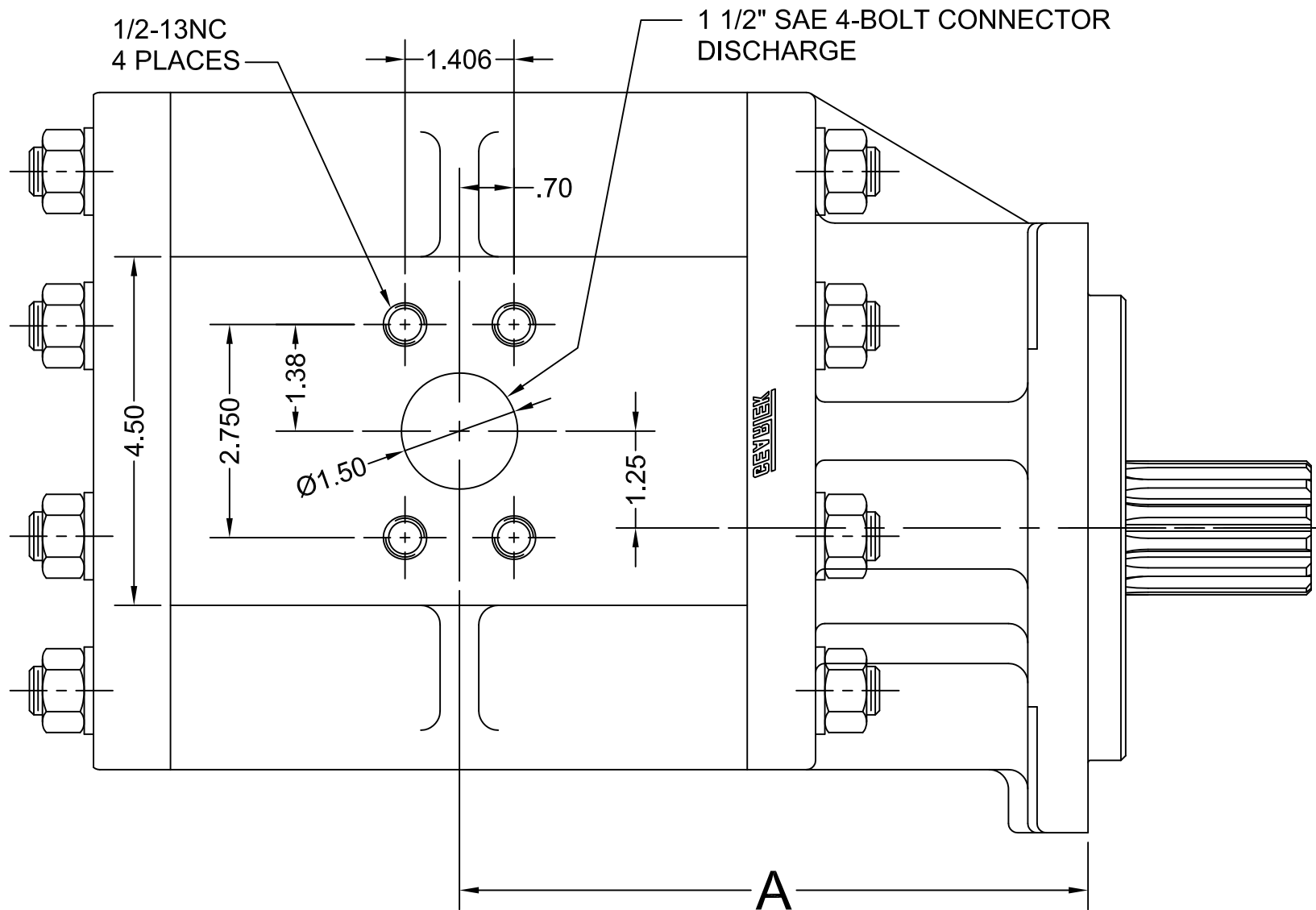
SERIES SIZE ROTATION PORTS FLANGE SHAFT

R=CLOCKWISE ROTATION

L=COUNTERCLOCKWISE ROTATION



DRAWN FOR 'R' RIGHT-HAND ROTATION



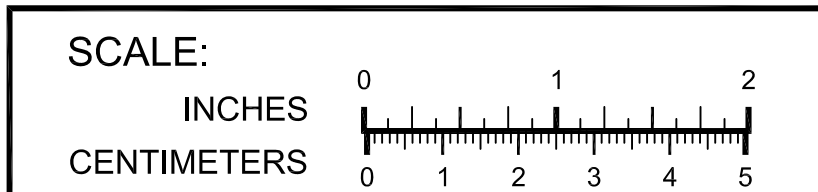
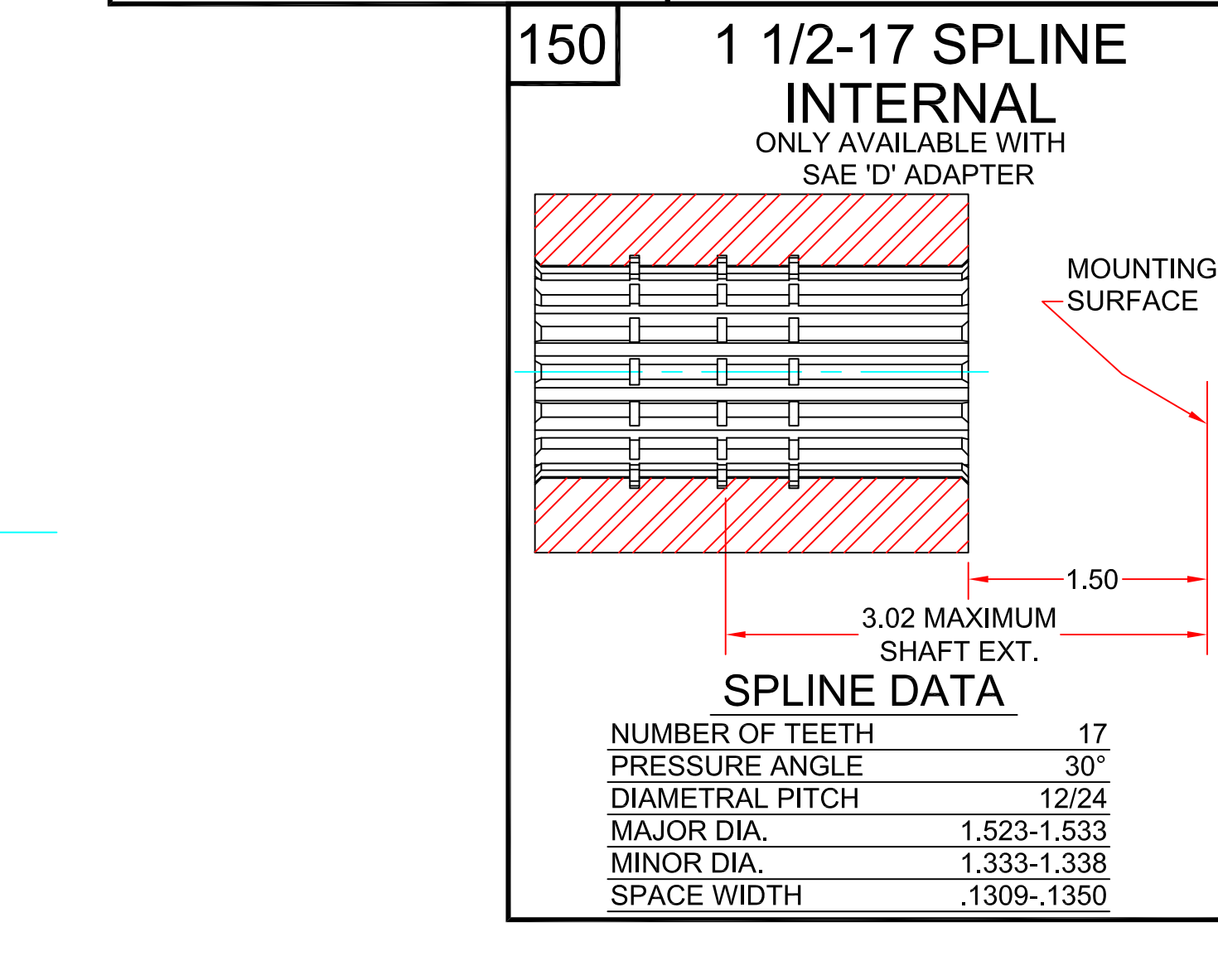
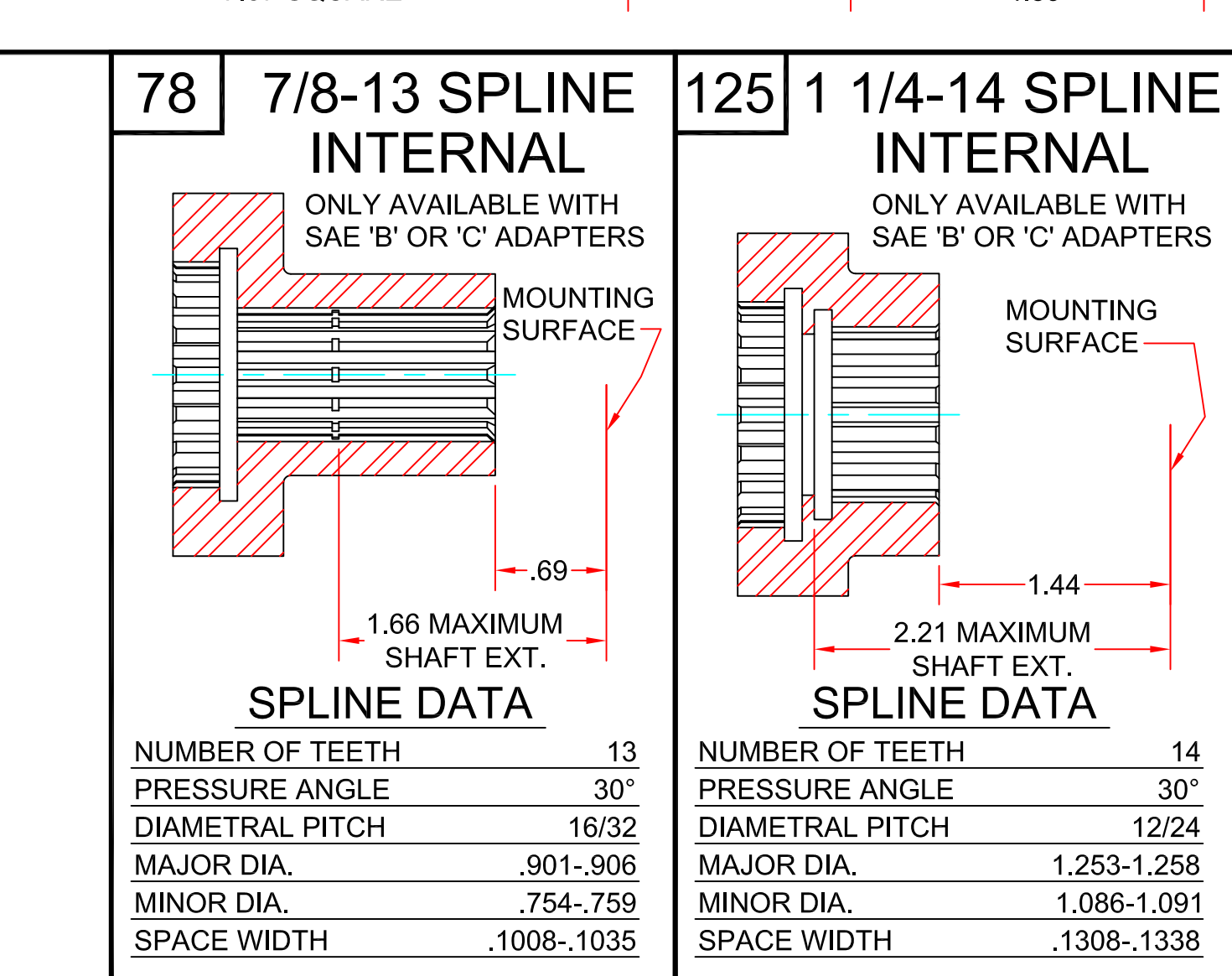
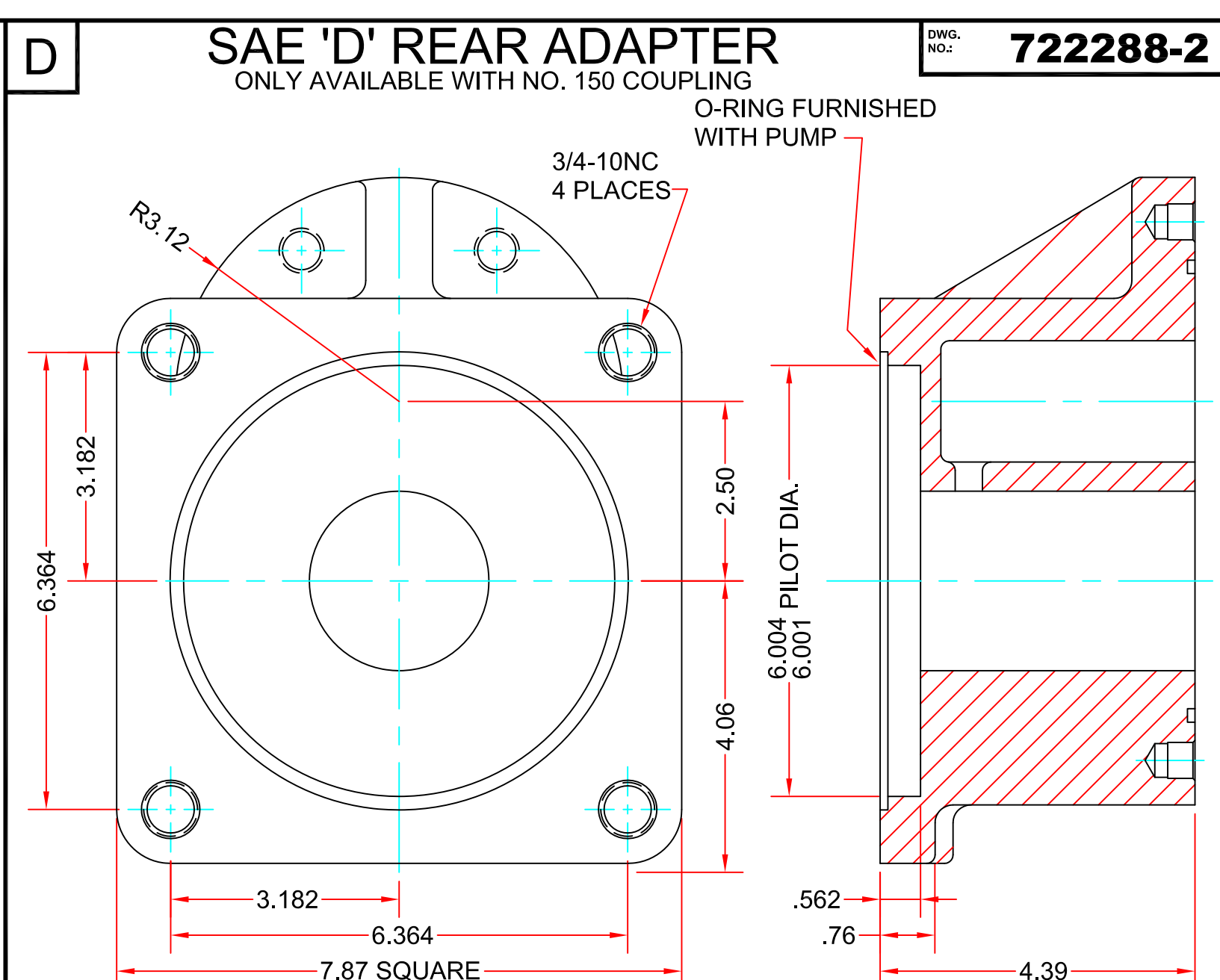
4	-	-	-	SCALE: HALF
3	-	-	-	DWN. BY: DR
2	-	-	-	DATE: 03/22/2001
1	MLM	Added F85 Size	04/20/2012	CKD. BY: -
REV.	BY	CHANGE DESCRIPTION	DATE	DATE
UNLESS OTHERWISE SPECIFIED: TWO-PLACE DECIMALS .XX = ±.030 THREE-PLACE DECIMALS .XXX = ±.010 ANGLES = 45° RADI .12				
Hydraulic Analysis, Inc. retains full proprietary rights to information on this document and reproduction or use thereof is unauthorized without written permission from Hydraulic Analysis, Inc.				




GEARIEK FLUID POWER PUMPS AND MOTORS
DIVISION OF HYDRAULIC ANALYSIS, INC.

TITLE:	MOUNTING DIMENSIONS 'F' SERIES SINGLE PUMP
MATERIAL:	DWG. NO.: 722300-1

REDRAWN 04/03/2007 MLM



4	-	-	-	SCALE: HALF	 FLUID POWER PUMPS AND MOTORS DIVISION OF HYDRAULIC ANALYSIS, INC.
3	-	-	-	DWN. BY: DR	
2	MAN	CORRECTED PRESSURE RATINGS	03/12/2001	DATE: 03/16/2001	
1	MAN	ADDED VARIABILITY SPECIFICATIONS FOR COUPLINGS & ADAPTERS	06/04/2001	DATE:	
REV.	BY	CHANGE DESCRIPTION	DATE	DATE:	
UNLESS OTHERWISE SPECIFIED: TWO-PLACE DECIMALS .XX = ±.030 THREE-PLACE DECIMALS .XXX = ±.010 ANGLES = 45° RADII .12			Hydraulic Analysis, Inc. retains full proprietary rights to information on this document and reproduction or use thereof is unauthorized without written permission from Hydraulic Analysis, Inc.		TITLE: MATERIAL: DWG. NO.: 722288-2



MOUNTING DIMENSIONS

SAE 4-BOLT CONNECTOR CHART

11/11/2019

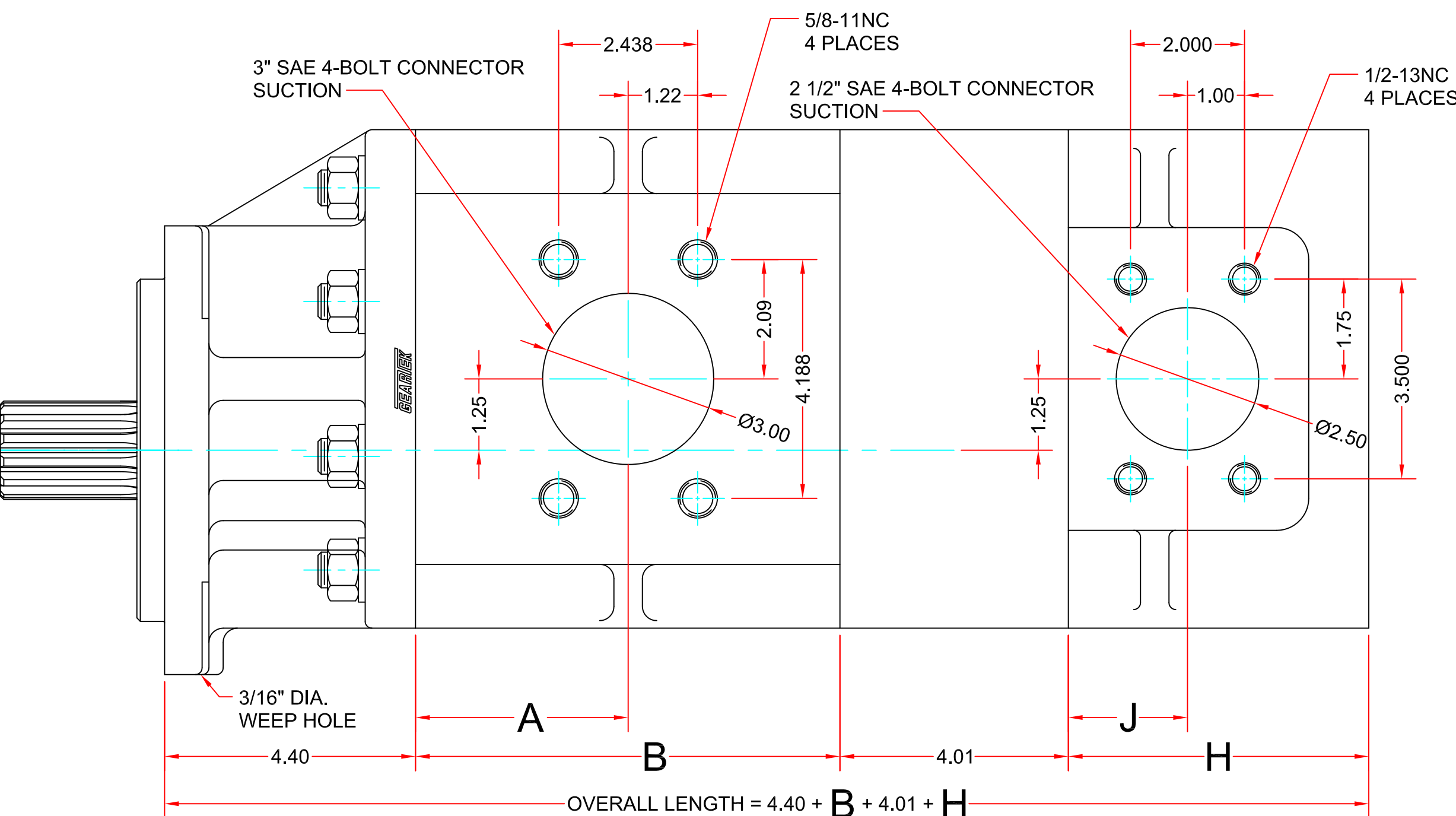
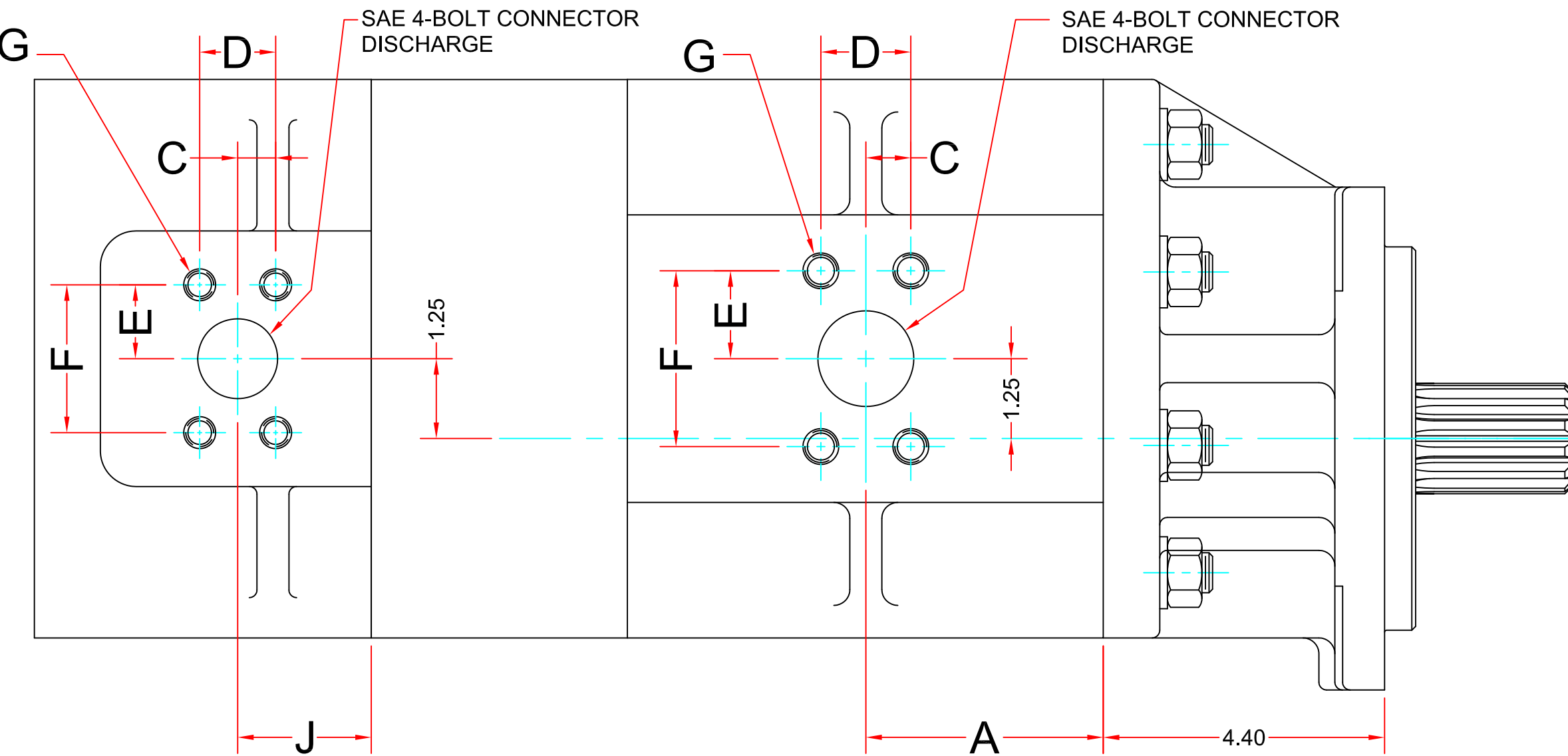
2	1 3/4-13 TOOTH SPLINE
---	-----------------------

TORQUE LIMIT 1800 LB/FT



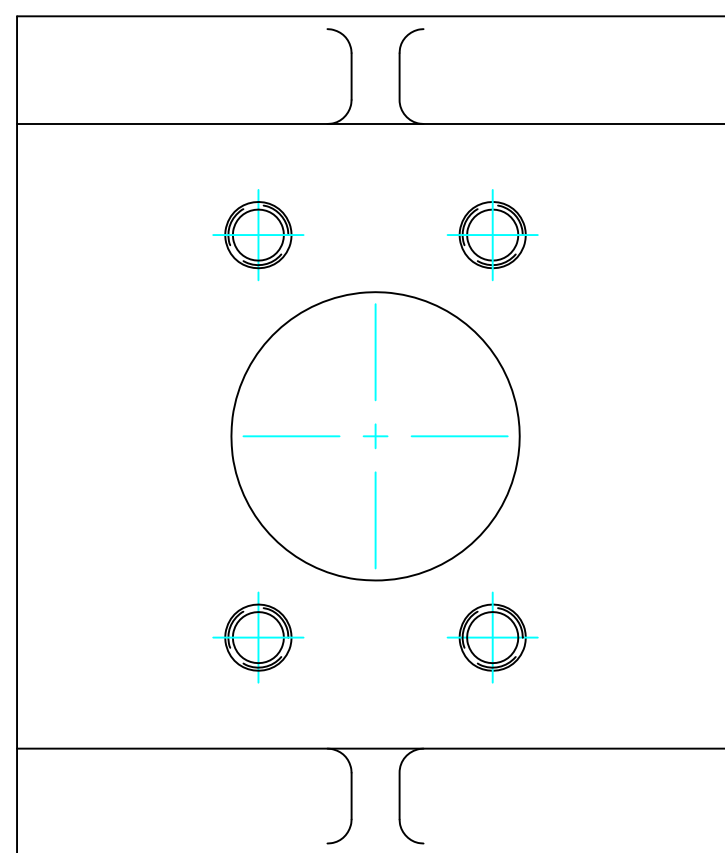
SPLINE DATA

NUMBER OF TEETH	13
PRESSURE ANGLE	30°
DIAMETRAL PITCH	8/16
MAJOR DIA.	1.723-1.729
MINOR DIA.	1.453-1.471



3 SAE 4-BOLT CONNECTOR

STANDARD PORTS AS SHOWN IN CHART
OPTIONAL PORTS AVAILABLE



MODEL EXAMPLE

FE 77 77 R - 2 D 3 3

SERIES ———> FE

SIZE ———> 77

PORTS ———> 3

FLANGE ———> D

SHAFT ———> 2


ROTATION ———> R

R=CLOCKWISE ROTATION
L=COUNTERCLOCKWISE ROTATION

SCALE:

INCHES

CENTIMETERS



GEARTEK® FLUID POWER PUMPS AND MOTORS
DIVISION OF HYDRAULIC ANALYSIS, INC.

TITLE:	MOUNTING DIMENSIONS 'FE' SERIES TANDEM PUMP
--------	------------------------------------------------

MATERIAL:	-	DWG. NO.:	722244-2
	-		

4	-	-	-	SCALE: HAL
3	-	-	-	DWN. BY: D
2	MLM	CORRECTED PRESSURE RATINGS	03/21/2014	DATE: 03/15/200
1	MLM	ADDED FIB & E85 SIZES	04/20/2012	CKD. BY:
REV.	BY	CHANGE DESCRIPTION	DATE	DATE

UNLESS OTHERWISE SPECIFIED:
TWO-PLACE DECIMALS .XX = ±0.30
THREE-PLACE DECIMALS .XXX = ±0.10
ANGLES = 45°

SCALE = 1/2"

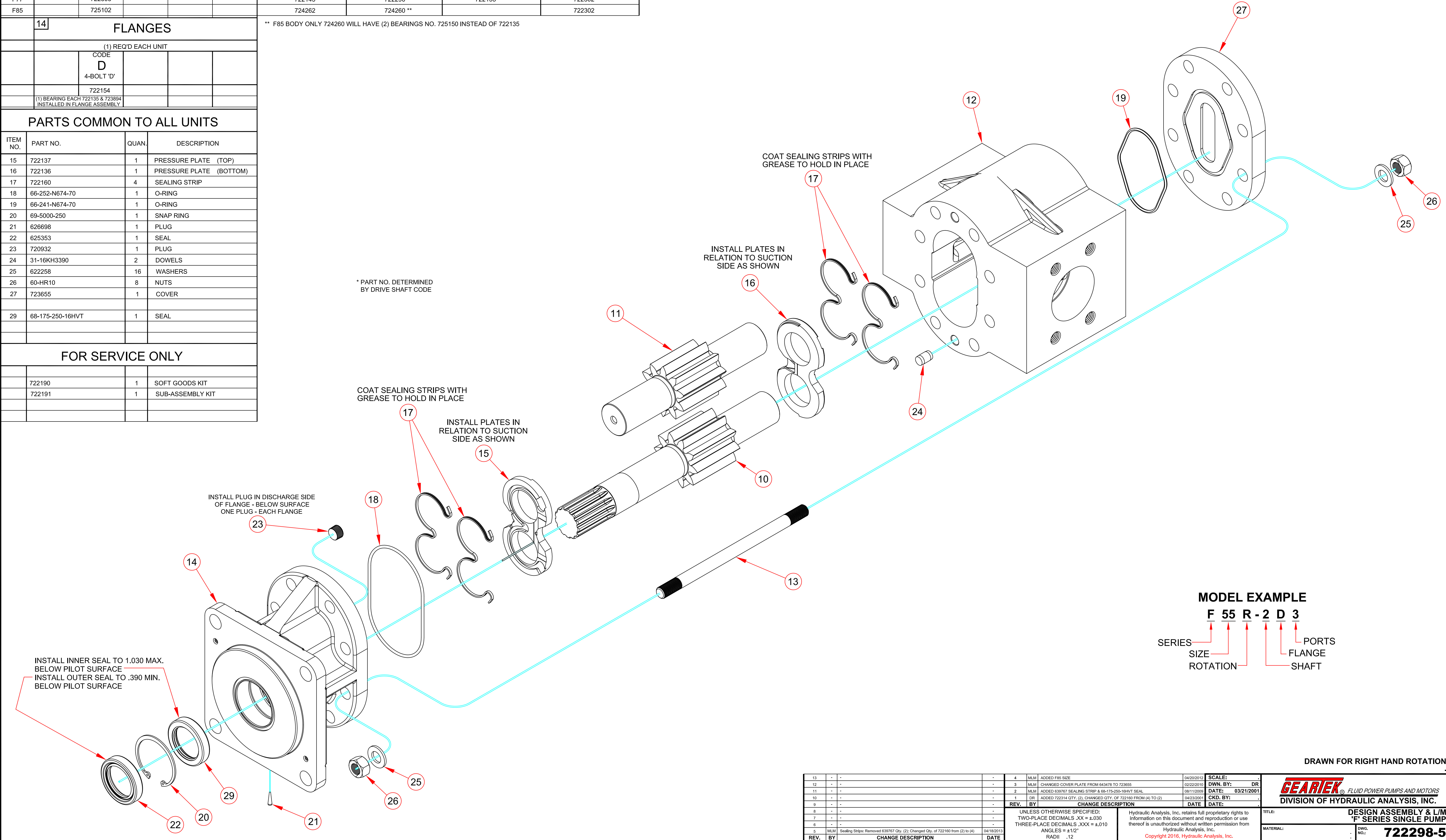
Hydraulic Analysis, Inc. retains full proprietary rights to information on this document and reproduction or use thereof is unauthorized without written permission from Hydraulic Analysis, Inc.

10 DRIVE GEARS (1) REQ'D EACH UNIT						11 IDLER GEARS (1) REQ'D EACH UNIT	12 BODIES CODE 3 (1) REQ'D EACH UNIT SAE 4-BOLT CONN. (2) BUSHINGS 722135 ** INCLUDED IN BODY ASS'Y.	BODIES (2) BUSHINGS 722135 ONLY INCLUDED IN BODY ASS'Y.	13 STUDS (8) REQ'D EACH UNIT
SIZE		CODE 2 1.75-13 SPLINE							
F45		722307				722153	722294	722159	722299
F50		722306				722151	722293	722158	722299
F55		722305				722149	722292	722157	626033
F66		722304				722147	722291	722156	722301
F77		722303				722145	722290	722155	722302
F85		725102				724262	724260 **		

14 FLANGES
(1) REQ'D EACH UNIT
CODE
D
4-BOLT "D"
722154
(1) BEARING EACH 722135 & 723894
INSTALLED IN FLANGE ASSEMBLY

** F85 BODY ONLY 724260 WILL HAVE (2) BEARINGS NO. 725150 INSTEAD OF 722135

PARTS COMMON TO ALL UNITS			
ITEM NO.	PART NO.	QUAN.	DESCRIPTION
15	722137	1	PRESSURE PLATE (TOP)
16	722136	1	PRESSURE PLATE (BOTTOM)
17	722160	4	SEALING STRIP
18	66-252-N674-70	1	O-RING
19	66-241-N674-70	1	O-RING
20	69-5000-250	1	SNAP RING
21	626698	1	PLUG
22	625353	1	SEAL
23	720932	1	PLUG
24	31-16KH3390	2	DOWELS
25	622258	16	WASHERS
26	60-HR10	8	NUTS
27	723655	1	COVER
29	68-175-250-16HVT	1	SEAL
FOR SERVICE ONLY			
	722190	1	SOFT GOODS KIT
	722191	1	SUB-ASSEMBLY KIT



MODEL EXAMPLE

F 55 R - 2 D 3

SERIES SIZE ROTATION PORTS FLANGE SHAFT

DRAWN FOR RIGHT HAND ROTATION

13	-	-	4	MLM	ADDED F85 SIZE	04/20/2012	SCALE:		
12	-	-	3	MLM	CHANGED COVER PLATE FROM 643478 TO 723655	02/22/2010	DWN. BY:	DR	
11	-	-	2	MLM	ADDED 639767 SEALING STRIP & 68-175-250-16HVT SEAL	08/11/2009	DATE:	03/21/2001	
10	-	-	1	DR	ADDED 722314 QTY. (2); CHANGED QTY. OF 722160 FROM (4) TO (2)	04/23/2001	CKD. BY:		
9	-	-	-	REV.	BY	CHANGE DESCRIPTION	DATE	DATE:	
8	-	-	-	UNLESS OTHERWISE SPECIFIED: TWO-PLACE DECIMALS .XX = ±.030 THREE-PLACE DECIMALS .XXX = ±.010 ANGLES = ±1/2° RADIi .12					
7	-	-	-	Hydraulic Analysis, Inc. retains full proprietary rights to information on this document and reproduction or use thereof is unauthorized without written permission from Hydraulic Analysis, Inc.					
6	-	-	-	Copyright 2016, Hydraulic Analysis, Inc.					
5	MLM	Sealing Strips Removed 639767 Qty. (2); Changed Qty. of 722160 from (2) to (4)	04/18/2013						
REV.	BY	CHANGE DESCRIPTION	DATE						
								TITLE:	DESIGN ASSEMBLY & L/M 'F' SERIES SINGLE PUMP
								MATERIAL:	
								DWG. NO.:	722298-5

SIZE	10] DRIVE GEARS (1) REQ'D EACH UNIT					11] IDLER GEARS	12] BODIES CODE 3	BODIES	13] STUDS
	(1) REQ'D EACH UNIT					(1) REQ'D EACH UNIT	(1) REQ'D EACH UNIT SAE 4-BOLT CONN.	BLANK PORT BODIES FOR PARTS ORDERS ONLY (2) BUSHINGS 722135 INCLUDED IN BODY ASS'Y.	(8) REQ'D EACH UNIT
	-	CODE 2 1.75-13 SPLINE	-	-	-	-	-		-
F45	-	722152M	-	-	-	722153	722294	722159	623416
F50	-	722150M	-	-	-	722151	722293	722158	623416
F55	-	722148M	-	-	-	722149	722292	722157	624409
F66	-	722146M	-	-	-	722147	722291	722156	626020
F77	-	722144M	-	-	-	722145	722290	722155	722297

14] FLANGES		14] ADAPTER REAR *			14] COUPLING REAR *			22 & 31] O-RING REAR ADAPTER			14] SNAP RING	
(1) REQ'D EACH UNIT		(1) REQ'D EACH UNIT			(1) REQ'D EACH UNIT			(1) EACH REQ'D EACH UNIT			(1) REQ'D FOR CODE	(2) REQ'D FOR CODE
CODE - 4-BOLT 'D'		CODE B 2 & 4 BOLT 'B'	CODE C 2 & 4 BOLT 'C'	CODE D 4-BOLT 'D'	CODE 78 7/8-13	CODE 125 1 1/4-14	CODE 150 1 1/2-17	FOR CODE B ADAPTER	FOR CODE C ADAPTER	FOR CODE D ADAPTER	78 COUPLING	150 COUPLING
722154		721209	721089	722164	721259	721258		ITEM 22				
(1) BEARING EACH 722135 & 723894 INSTALLED IN FLANGE ASSEMBLY		(2) CAPSCREWS 73D-8-12HG8	(4) CAPSCREWS 73D-8-12HG8	(4) CAPSCREWS 73D-12-14HG8	These Two Available w/ 'B' & 'C' Adapters ONLY!!		723594	ITEM 31	66-045-N674-70	66-049-N674-70	66-258-N674-70	69-N5000-75
									66-157-N552-90	66-157-N552-90	66-252-N674-70	69-5000-137

PARTS COMMON TO ALL UNITS

ITEM NO.	PART NO.	QUAN.	DESCRIPTION
18	722137	1	PRESSURE PLATE (TOP)
19	722136	1	PRESSURE PLATE (BOTTOM)
20	722160	4	SEALING STRIP
21	66-252-N674-70	1	O-RING
-	-	-	-
23	69-5000-250	1	SNAP RING
-	-	-	-
25	625353	1	SEAL
26	720932	1	PLUG
27	31-16KH3390	4	DOWELS
28	622258	8	WASHERS
29	626698	1	PLUG
30	60-HR10	8	NUT
31	68-175-250-16HVT	1	SEAL

FOR SERVICE ONLY

	722194	1	SOFT GOODS KIT
	722195	1	SUB-ASSEMBLY KIT
	722309	1	SOFT GOODS KIT w/ O-RINGS FOR ALL ADAPTERS
	-	-	-

COAT SEALING STRIPS WITH GREASE TO HOLD IN PLACE

INSTALL PLATES IN RELATION TO SUCTION SIDE AS SHOWN

INSTALL INNER SEAL TO 1.030 MAX. BELOW PILOT SURFACE
INSTALL OUTER SEAL TO .390 MIN. BELOW PILOT SURFACE

INSTALL PLUG IN DISCHARGE SIDE OF FLANGE - BELOW SURFACE
ONE PLUG - EACH FLANGE

COAT SEALING STRIPS WITH GREASE TO HOLD IN PLACE

UNLESS OTHERWISE SPECIFIED:
TWO-PLACE DECIMALS .XX = ±.030
THREE-PLACE DECIMALS .XXX = ±.010
ANGLES = ±1/2°
RADIi .12

Hydraulic Analysis, Inc. retains full proprietary rights to information on this document and reproduction or use thereof is unauthorized without written permission from Hydraulic Analysis, Inc.
Copyright 2016, Hydraulic Analysis, Inc.

13] STUDS
12] BODIES CODE 3
11] IDLER GEARS
10] DRIVE GEARS
9] -
8] -
7] MLM Added Capscrews for Rear Adapters 08/19/2013
6] MLM Added Availability Specifications for Rear Adapters & Couplings 08/08/2013
5] MLM Sealing Strips: Removed 626767 Qty. (2); Changed Qty. of 722160 from (2) to (4) 04/18/2013
4] MLM CHANGED O-RING 722317 TO SEALING STRIP 722755 11/05/2008
3] MLM CHANGED '150' COUPLING FROM 722218 TO 723594 01/31/2008
2] MLM CHANGED DRIVE GEARS TO REQUIRE 'M' MODIFICATION 12/30/2003
1] DR ADDED 722317 QTY. (2); CHANGED QTY. OF 722160 FROM (4) TO (2) 04/23/2001
REV. BY CHANGE DESCRIPTION DATE

SCALE: DWN. BY: DR
DATE: 03/19/2001
CKD. BY: -
DATE: -

TITLE: DESIGN ASSEMBLY & L/M 'FB' SERIES PIGGY-BACK PUMPS
MATERIAL: DWG. NO.: 722296-7

DRAWN FOR RIGHT HAND ROTATION
CATALOG MODEL FB77R-2D-C78 SHOWN

GEARTEK® FLUID POWER PUMPS AND MOTORS
DIVISION OF HYDRAULIC ANALYSIS, INC.

MODEL EXAMPLE
FB 55 R - 2 D 3 - D 150
SERIES SIZE ROTATION R=CLOCKWISE L=COUNTERCLOCKWISE PORTS FLANGE SHAFT
* REAR COUPLING
* REAR ADAPTER
REAR PUMP MODEL

