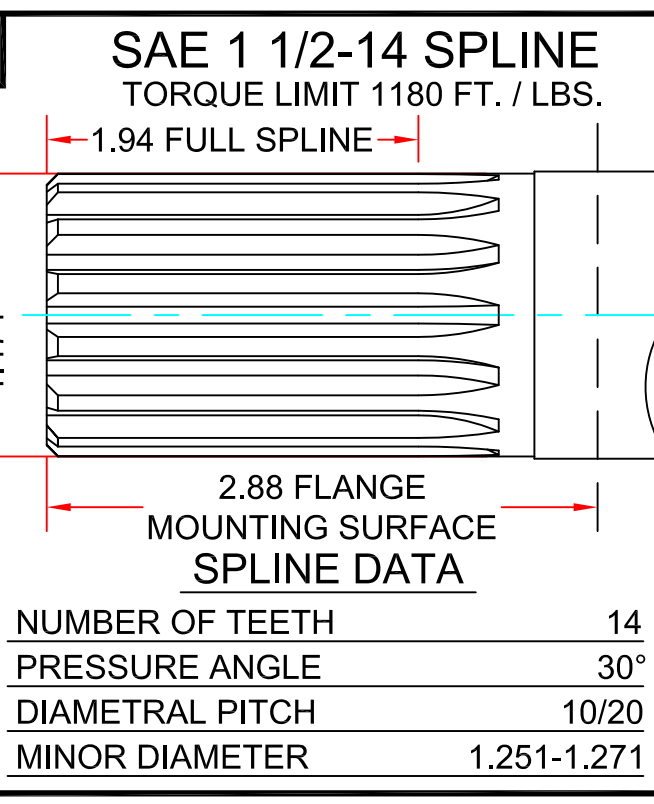
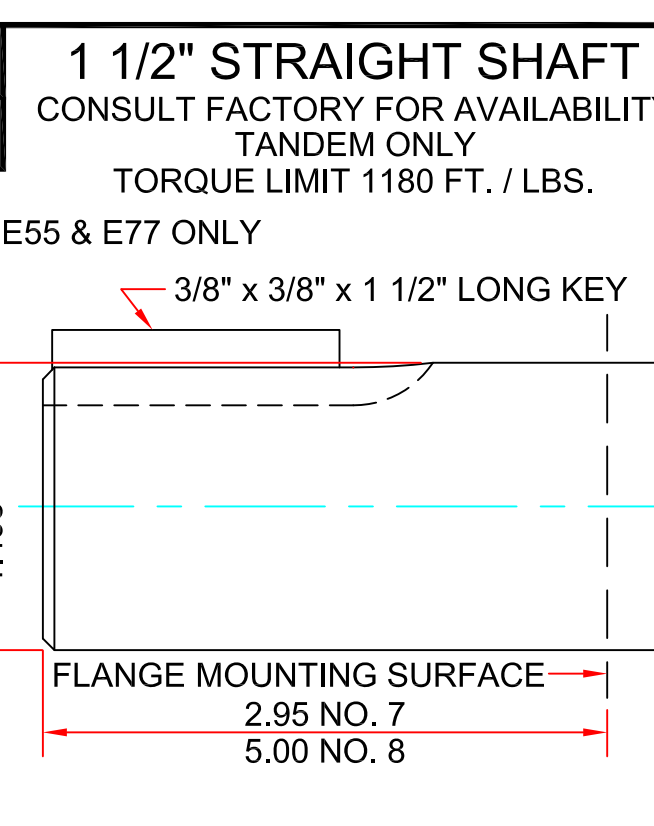
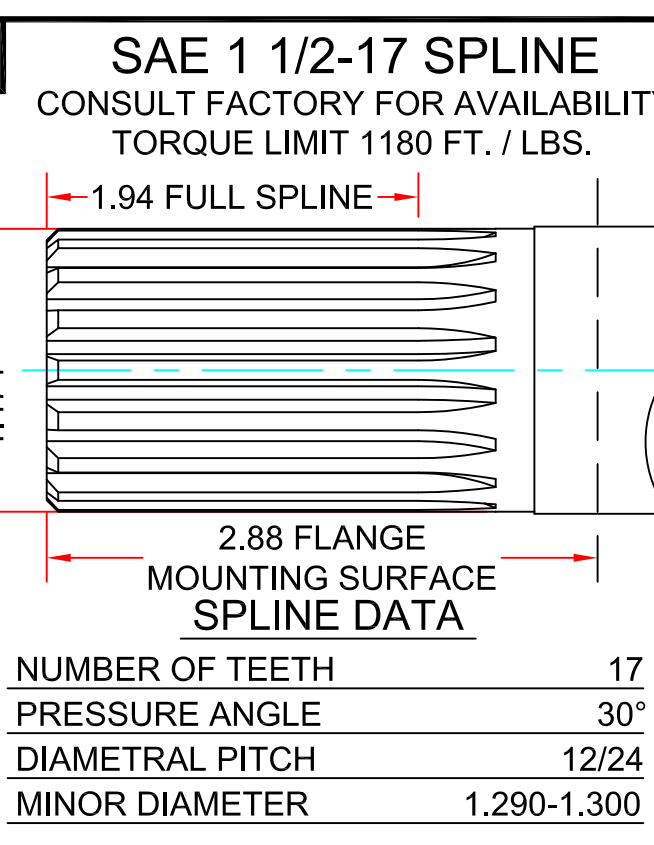
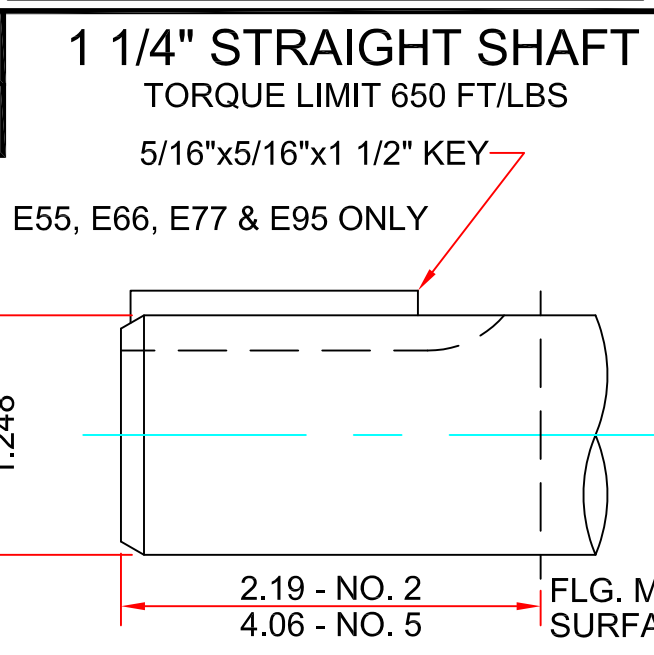
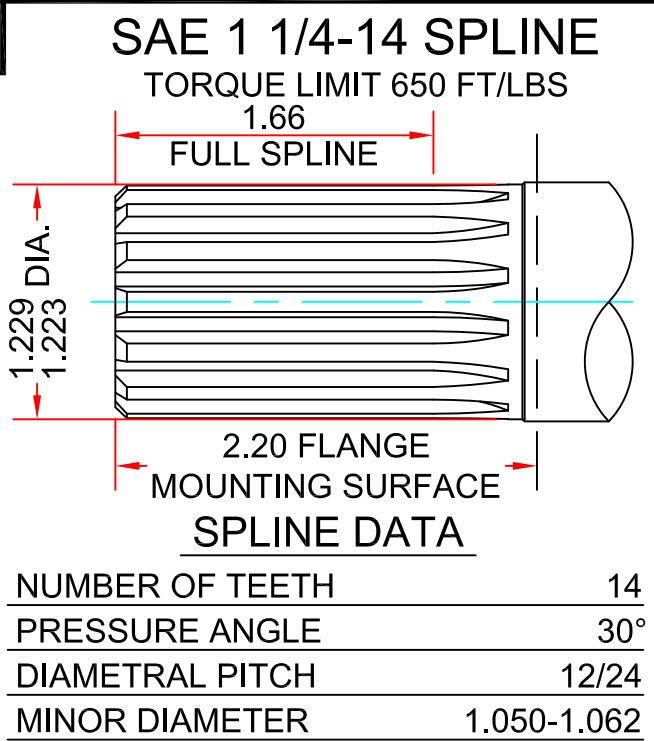
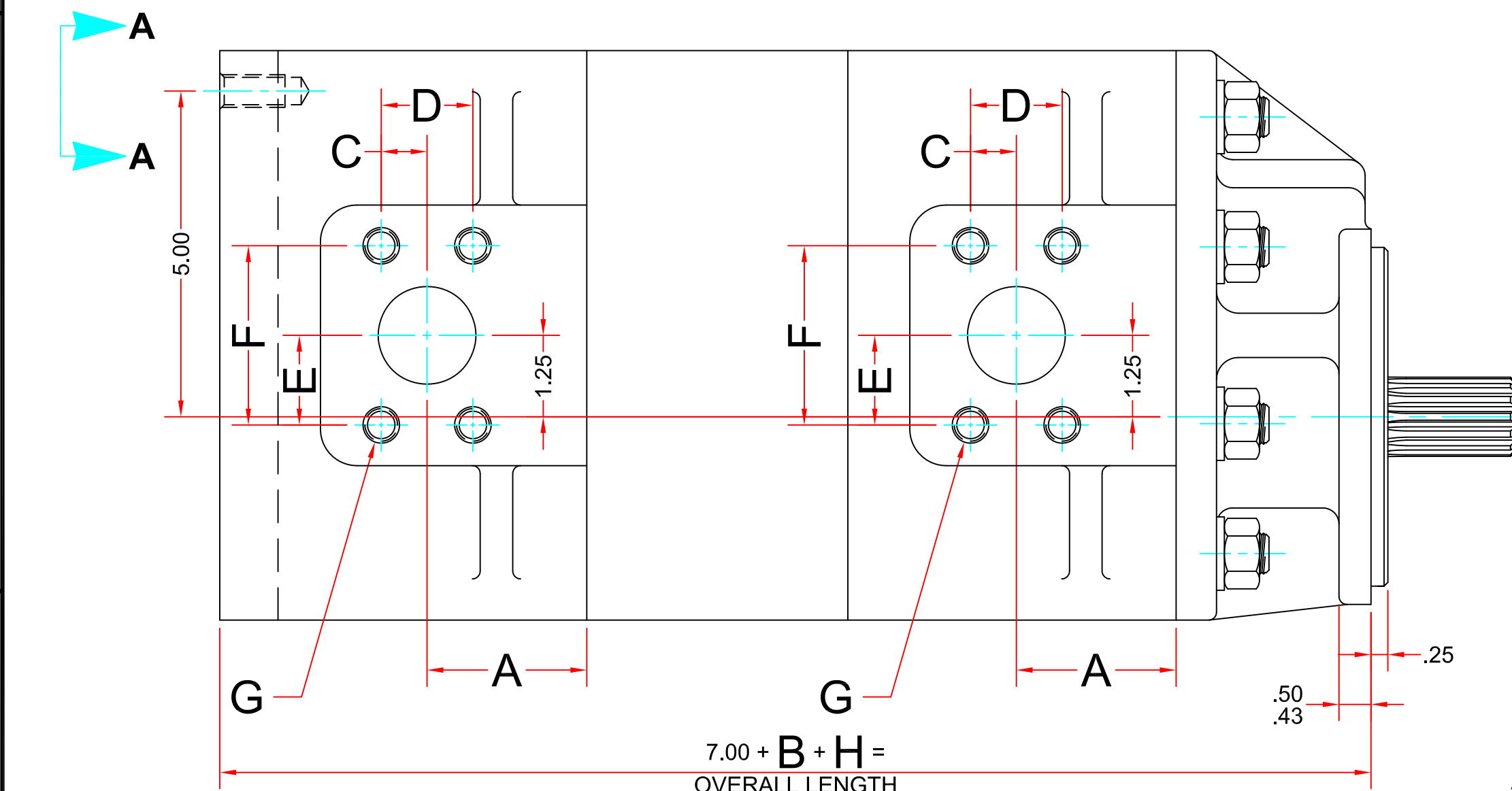
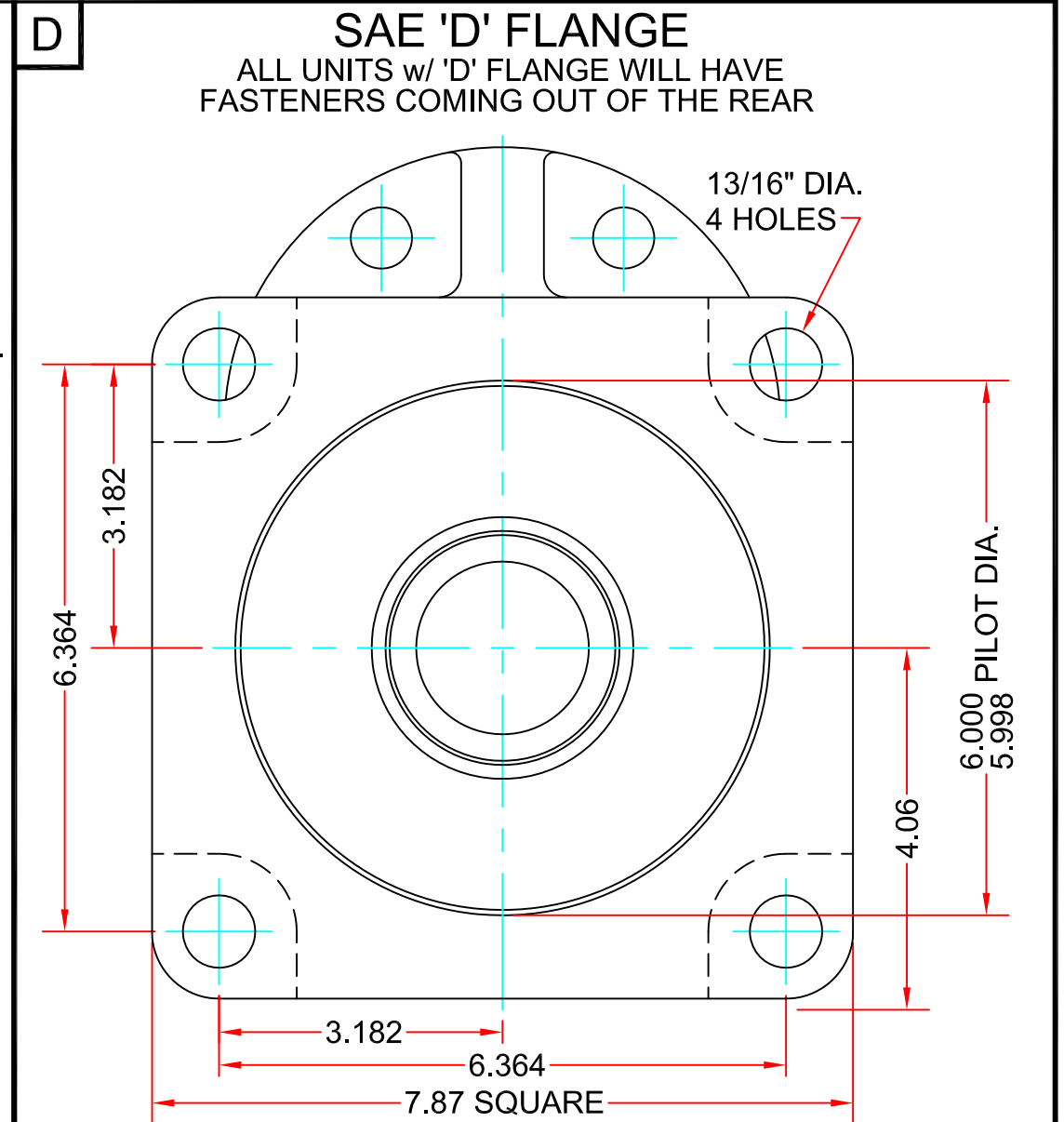
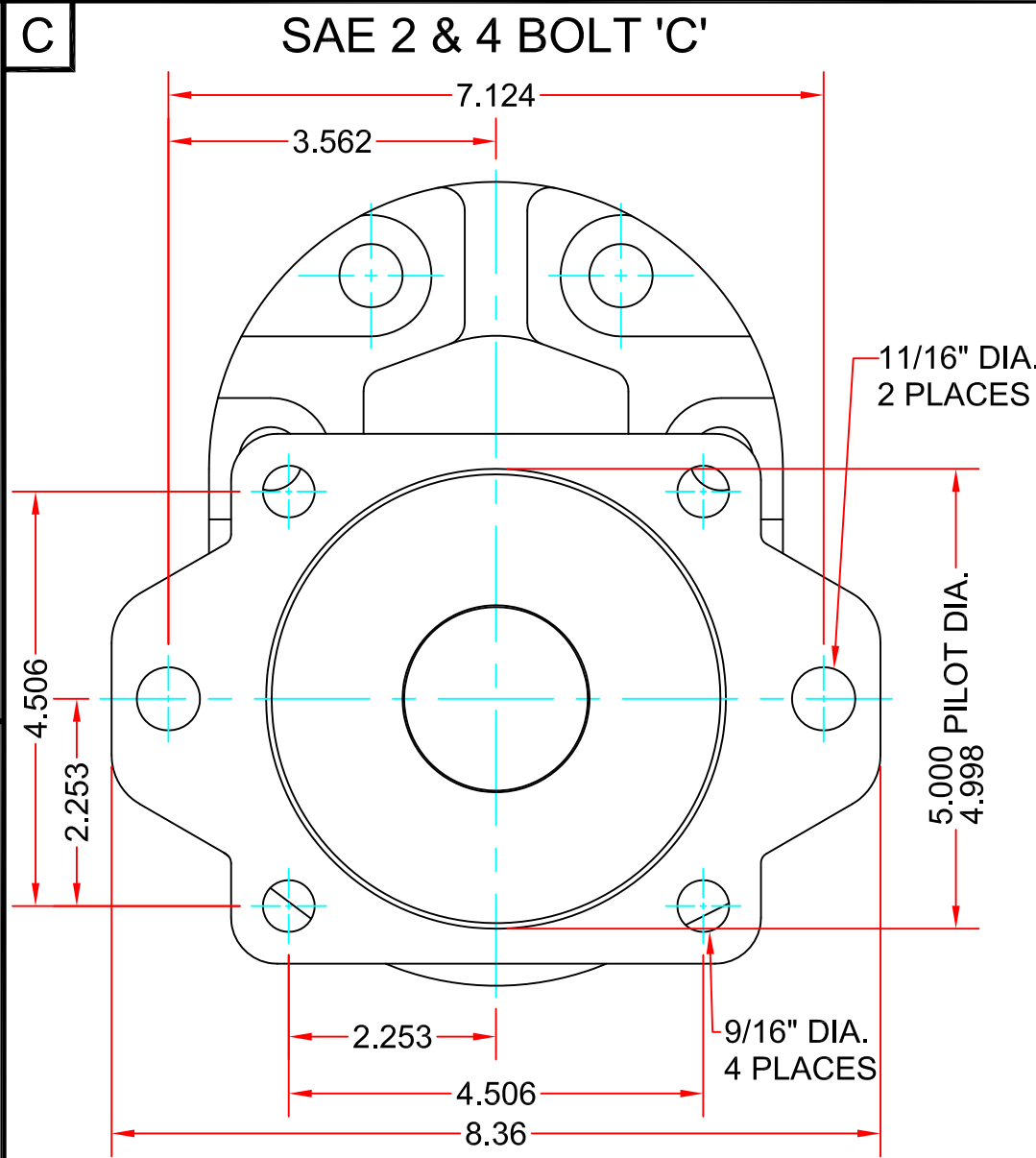


**SHAFTS AVAILABLE**  
FULL SCALE

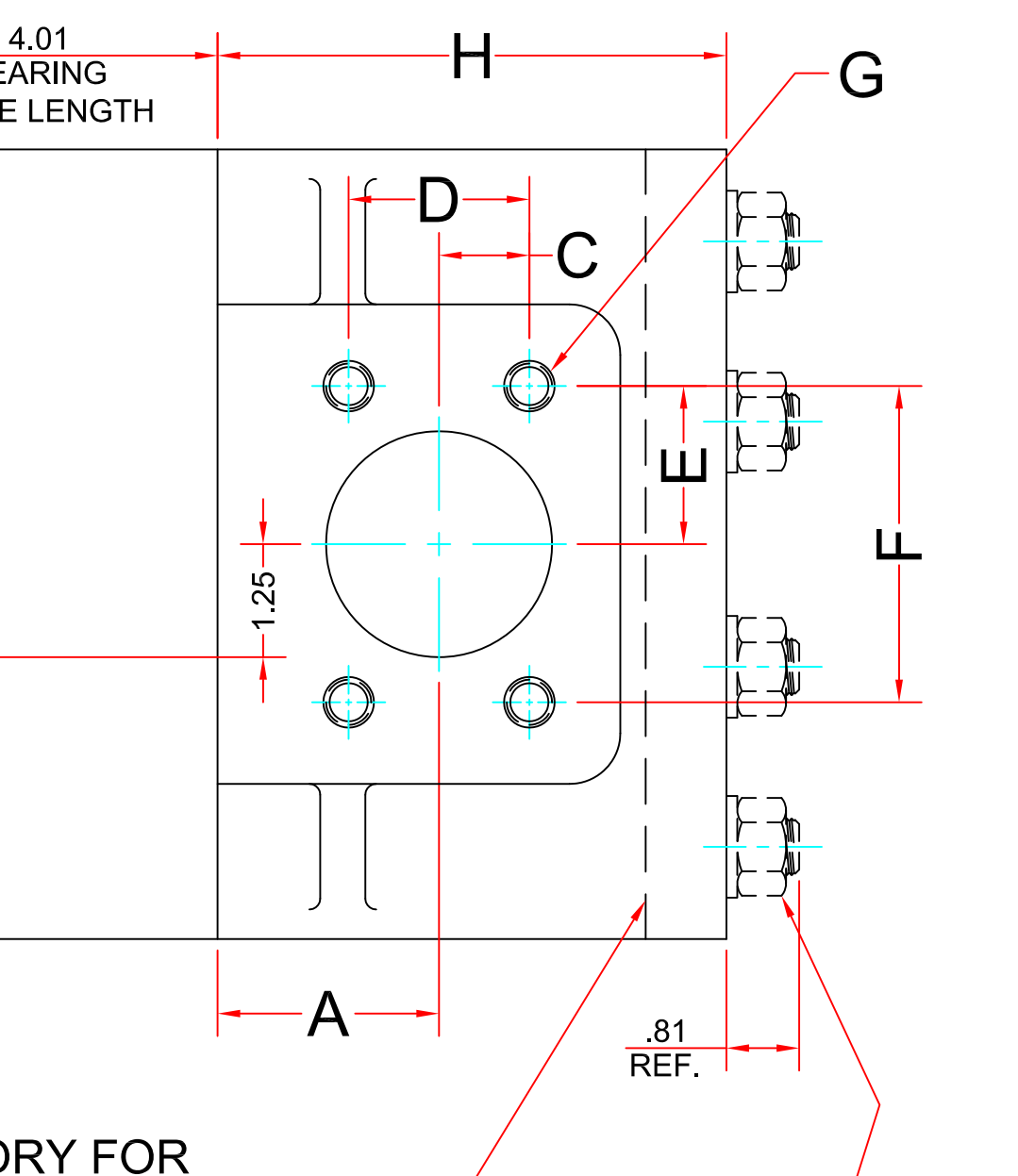
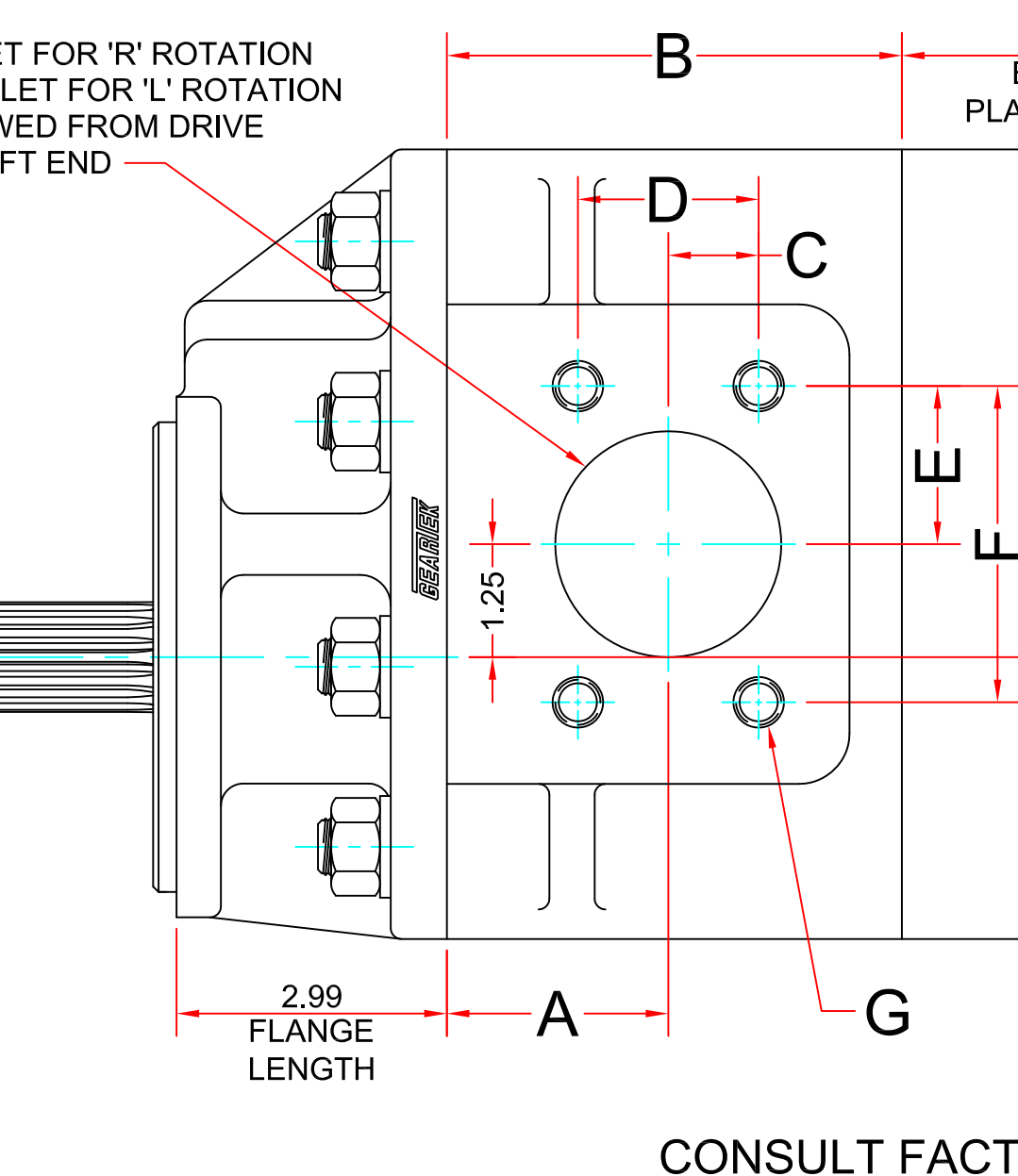
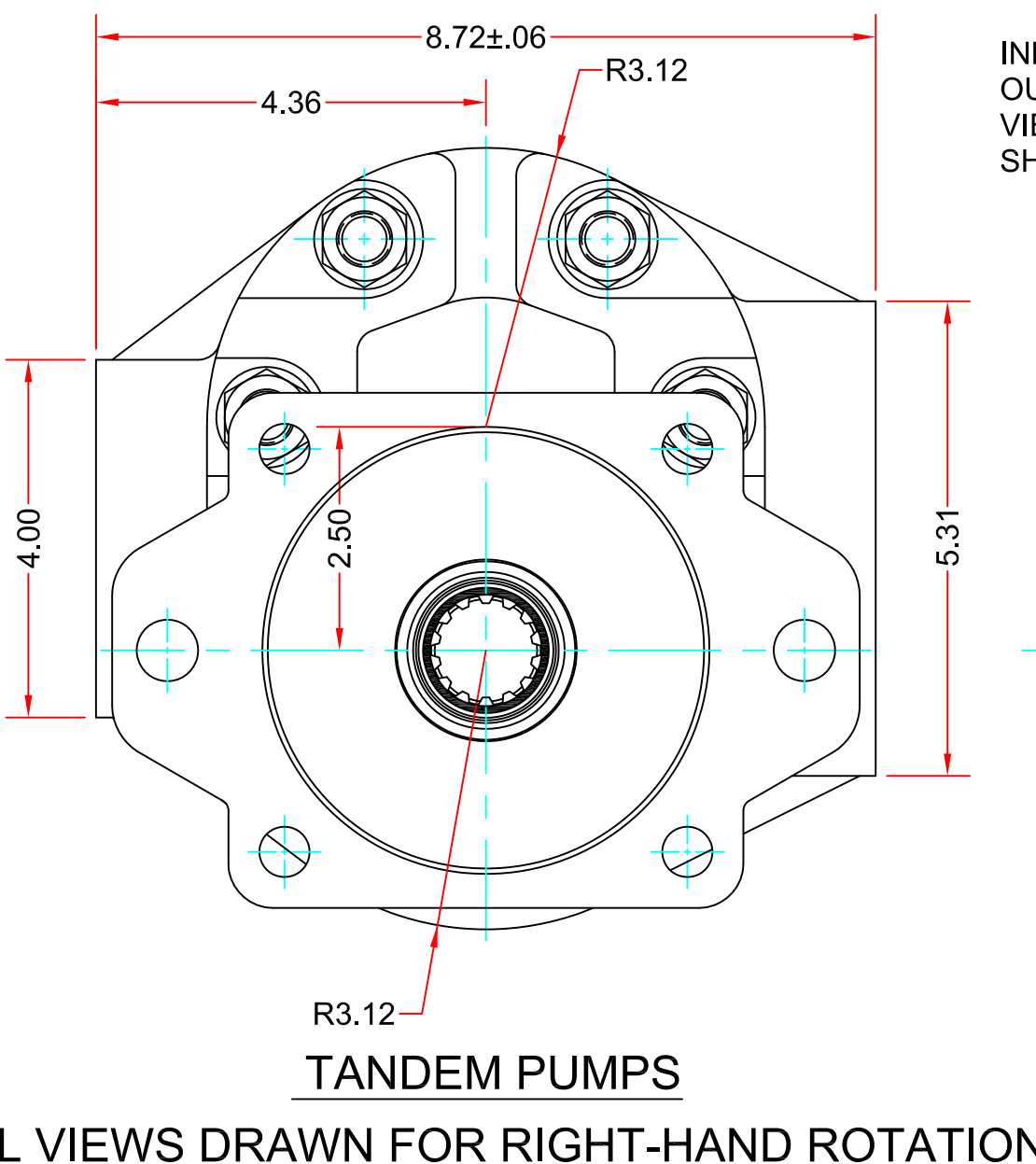
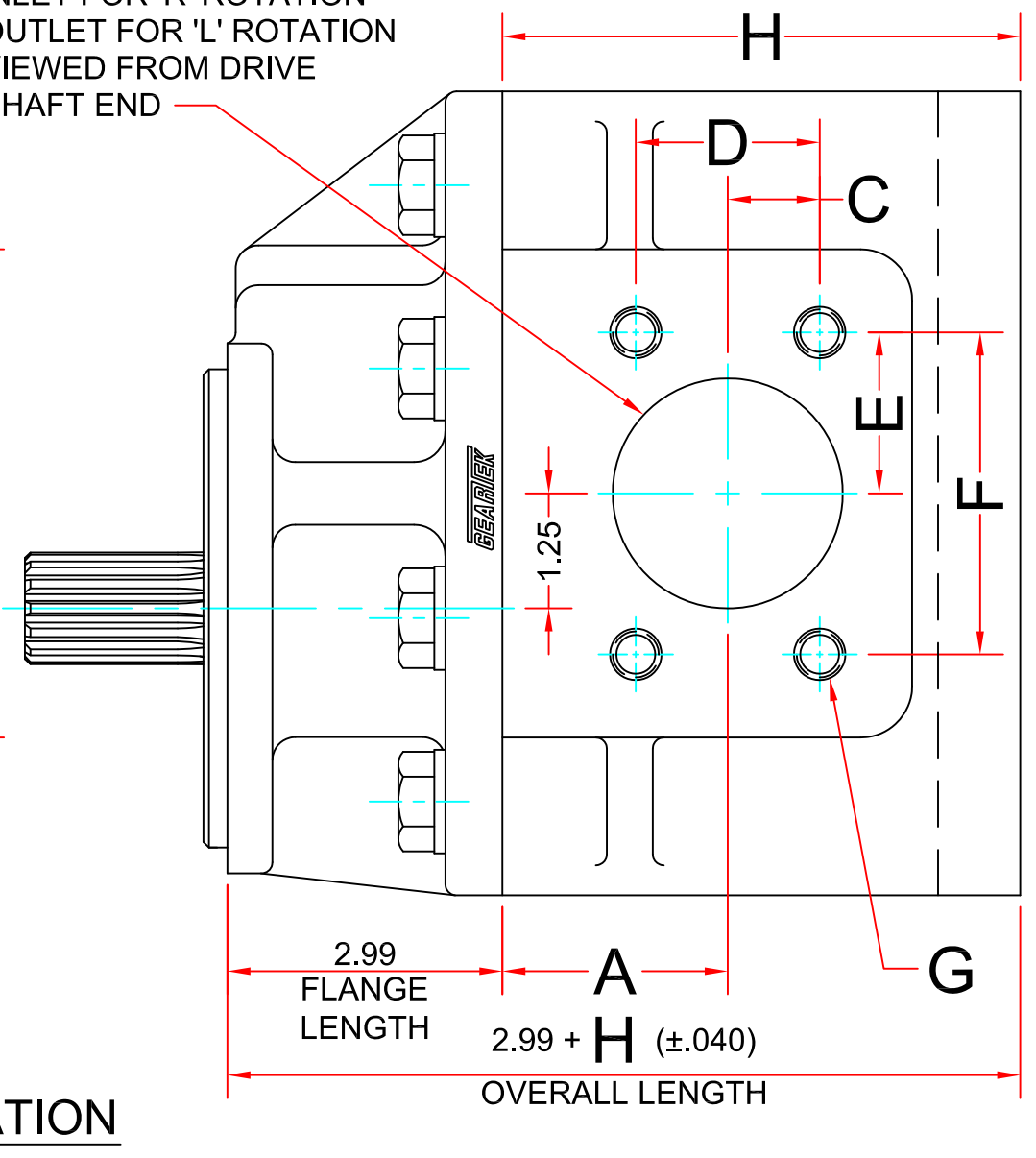
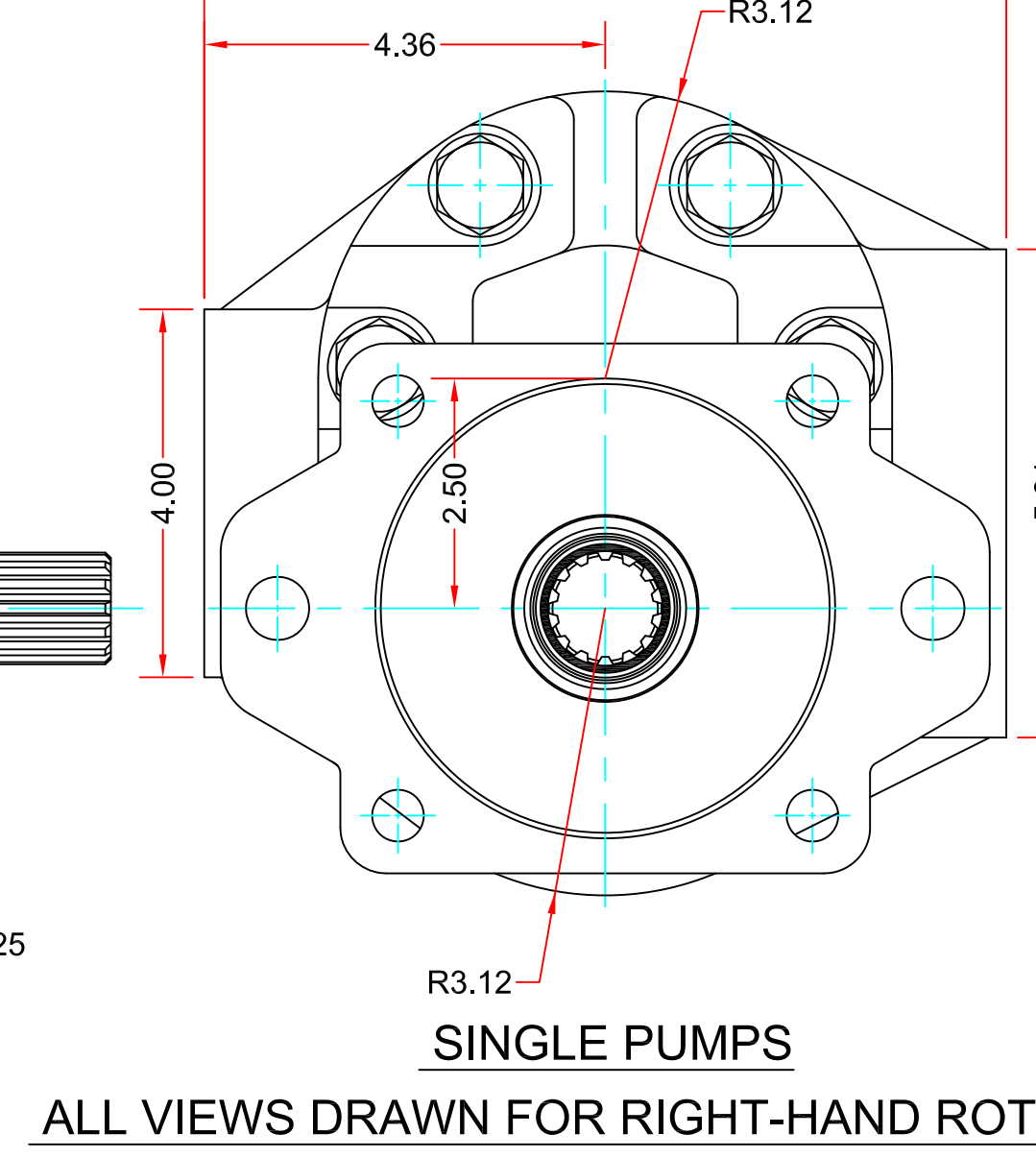
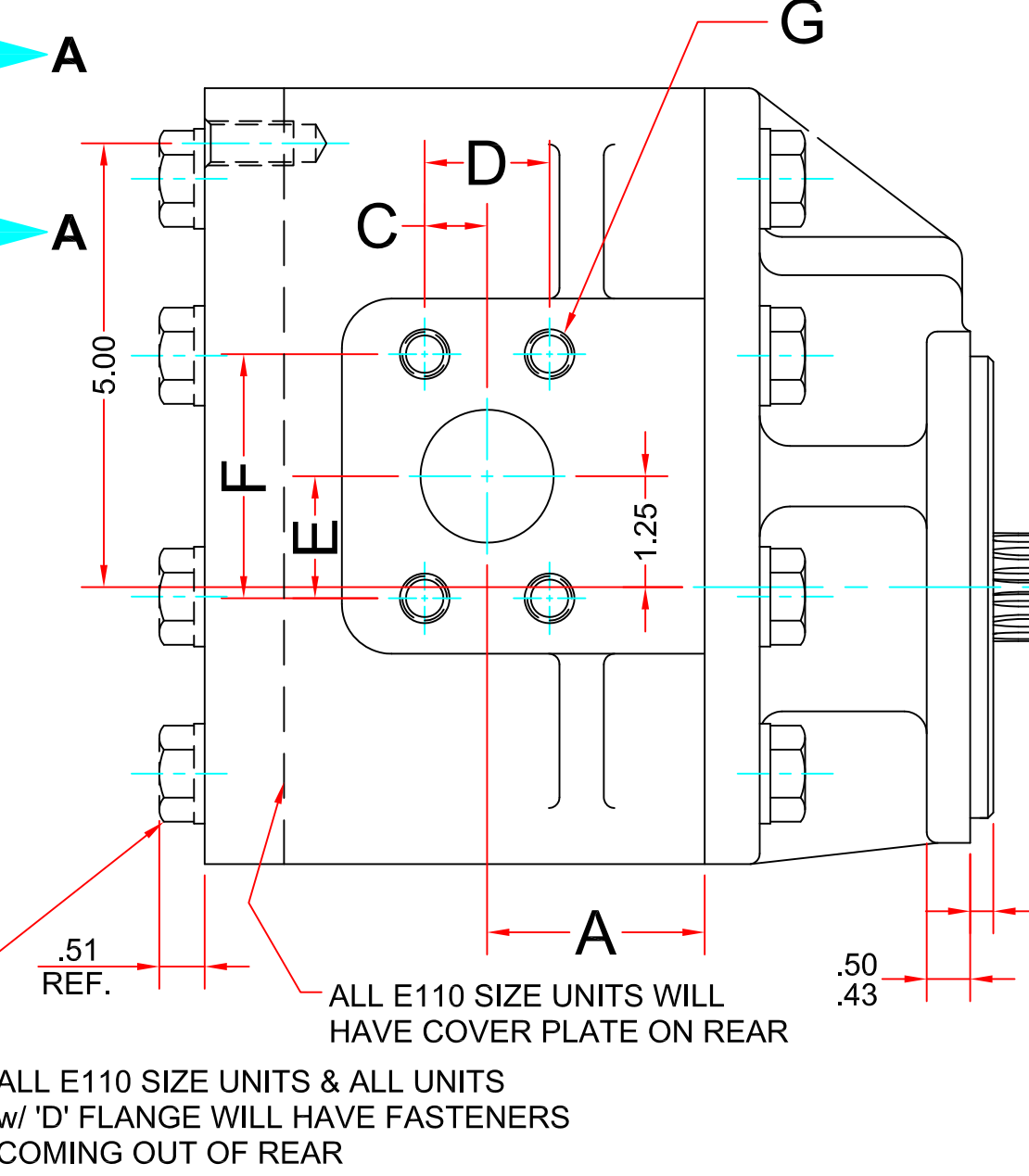
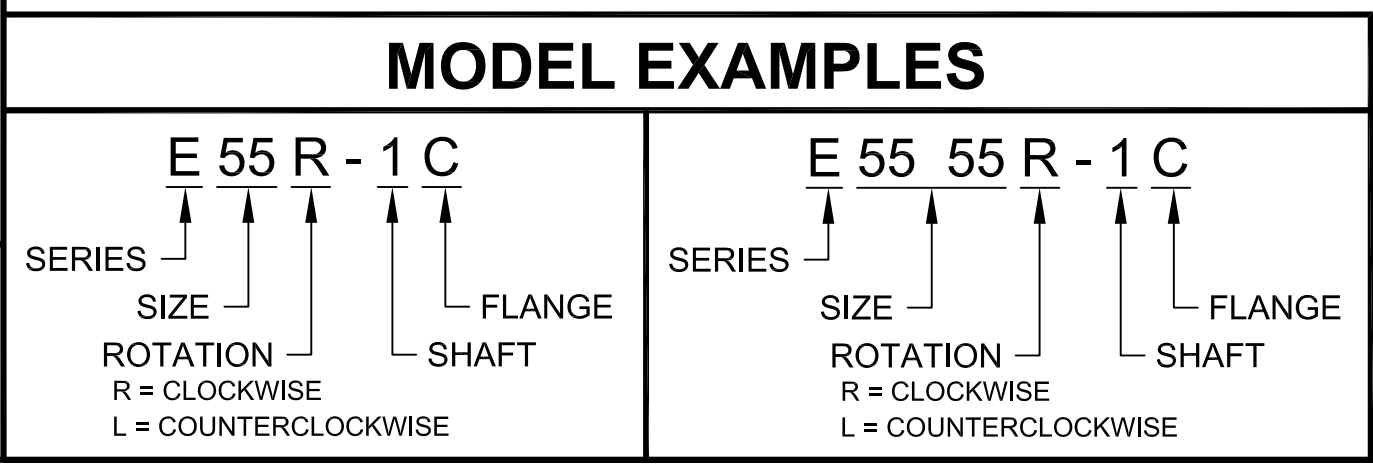


**FLANGES AVAILABLE**



FOR METRIC DIMENSIONS MULTIPLY 25.4 x IN. = mm \* CONSULT FACTORY WITH TYPE APPLICATION \*\* LIMITED SHAFT AVAILABILITY FOR THESE SIZES

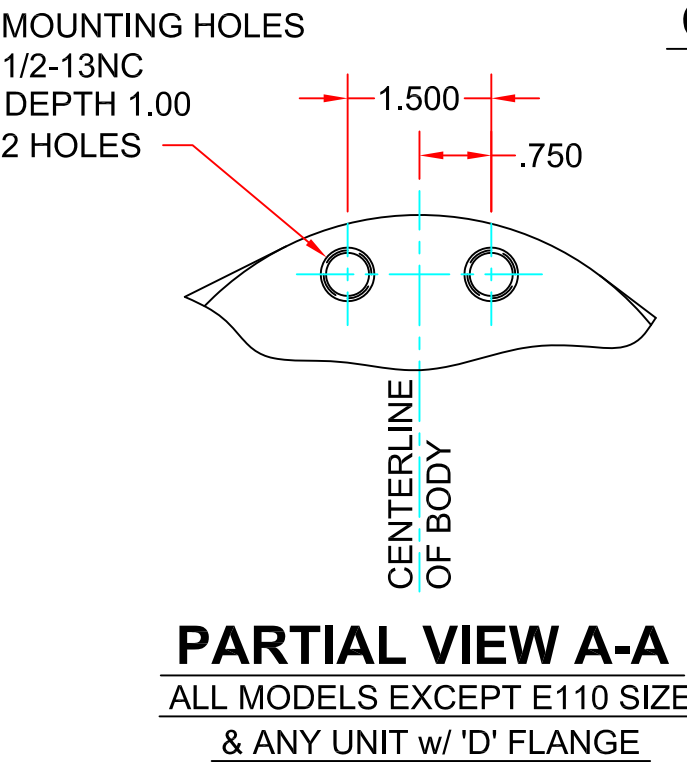
SIZE	MOUNTING DIMENSIONS			SPECIFICATIONS								
	A	B	H	INLET SIZE	OUTLET SIZE	U.S. GALLONS	CUBIC INCHES	LITERS	MIN. RPM	MAX. RPM	MAX. PRESSURE PSI	BAR
E30	1.75	4.33	4.92	2 1/2"	1 1/4"	.0258	5.96	.0977	600	2500	4000	276
E35	1.92	4.51	5.10	2 1/2"	1 1/4"	.0300	6.93	.1136	600	2500	4000	276
E40	2.09	4.68	5.27	2 1/2"	1 1/4"	.0342	7.90	.1295	600	2500	4000*	276
E45	2.28	4.87	5.46	2 1/2"	1 1/4"	.0386	8.92	.1462	600	2500	4000*	276
E50	2.45	5.04	5.63	2 1/2"	1 1/2"	.0427	9.86	.1617	600	2500	3800*	262
E55	2.63	5.22	5.81	2 1/2"	1 1/2"	.0470	10.86	.1780	600	2500	3400*	234
E66	3.05	5.64	6.23	2 1/2"	1 1/2"	.0570	13.17	.2159	600	2500	2900*	200
E77	3.42	6.01	6.60	2 1/2"	1 1/2"	.0658	15.20	.2492	600	2500	2500*	172
E85 **	3.00	6.30	6.89	2 1/2"	1 1/2"	.0727	16.79	.2752	600	2500	2250*	155
E95	3.00	6.68	7.27	3"	2"	.0818	18.90	.3098	600	2500	2000*	138
E110 **	3.05	7.24	8.17	3"	2"	.0952	22.00	.3605	600	2500	1500*	103



PRESSURES MAY BE LIMITED TO SHAFT TYPE

**SAE 4-BOLT CONNECTOR CHART**

SIZE	C	D	E	F	G
-	-	-	-	-	-
-	-	-	-	-	-
1 1/4"	.594	1.188	1.157	2.313	7/16-14
1 1/2"	.703	1.406	1.375	2.750	1/2-13
2"	.844	1.688	1.531	3.062	1/2-13
2 1/2"	1.000	2.000	1.750	3.500	1/2-13
3"	1.219	2.438	2.094	4.188	5/8-11
-	-	-	-	-	-



REV.	BY	CHANGE DESCRIPTION	DATE	SCALE	DWN. BY:	DR	DATE:	DATE:
13	-	-	-	-	-	-	-	-
12	-	-	-	-	-	-	-	-
11	-	-	-	-	-	-	-	-
10	-	-	-	-	-	-	-	-
9	-	-	-	-	-	-	-	-
8	-	-	-	-	-	-	-	-
7	-	-	-	-	-	-	-	-
6	-	-	-	-	-	-	-	-
5	MM	ADDED 'D' FLANGE & E110 SIZE	02/19/2016	-	-	-	-	-
4	MLM	ADDED SHAFT TORQUE LIMIT	03/19/2014	-	-	-	-	-
3	MLM	ADDED ERS SIZE	04/20/2012	-	-	-	-	-
2	DR	ADDED ERS FOR FRONT & REAR SECTION	03/01/2002	-	-	-	-	-
1	DR	ADDED BRACKET HOLES TO REAR 1/2-13NC	12/20/1995	-	-	-	-	-

UNLESS OTHERWISE SPECIFIED:  
TWO-PLACE DECIMALS .XX ±.030  
THREE-PLACE DECIMALS .XXX ±.010  
ANGLES ±1/2°  
RADI .12

Hydraulic Analysis, Inc. retains full proprietary rights to information on this document and reproduction or use thereof is unauthorized without written permission from Hydraulic Analysis, Inc.  
Copyright 2016, Hydraulic Analysis, Inc.

**GEARTEK** FLUID POWER PUMPS AND MOTORS  
DIVISION OF HYDRAULIC ANALYSIS, INC.

TITLE: **MOUNTING DIMENSIONS E SERIES**  
MATERIAL: \_\_\_\_\_  
DWG. NO.: **721103-5**